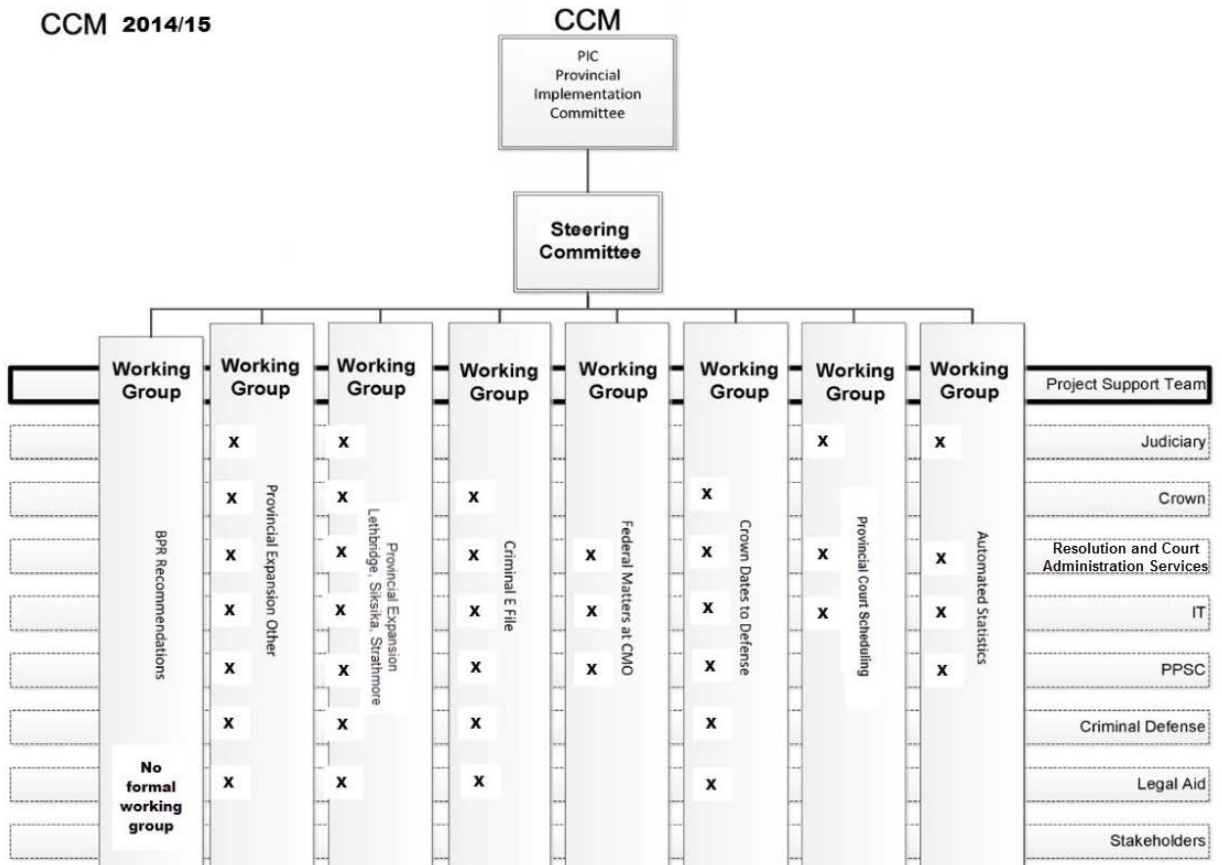




CCM Governance

CCM 2014/15



Role	Accountabilities
<p>Provincial Implementation Committee (PIC)</p> <p>Membership:</p> <p>Chair: Chief Judge T. Matchett - Provincial Court of Alberta</p> <ul style="list-style-type: none"> ▪ Kim Armstrong, Deputy Attorney General and Associate Deputy Minister, Justice and Solicitor General ▪ Assistant Chief Judge Ogle of the Provincial Court of Alberta ▪ Gerald Lamoureux, Assistant Deputy Minister, IMTS ▪ Lynn Varty, Assistant Deputy Minister, RCAS ▪ Peter Teasdale, Acting Assistant Deputy Minister, ACPS ▪ Wes Smart, Q.C., Chief Federal Prosecutor, PPSC ▪ Margaret Keelaghan, Senior Managing Counsel, Calgary Legal Guidance ▪ Suzanne Polkosnik, Q.C., President and Chief Executive Officer. Legal Aid Alberta 	<ul style="list-style-type: none"> ▪ Provide final authority on resolution of major project issues outside the control of the Steering Committee ▪ Approve project scope, schedule and budget ▪ Approve of changes to project scope, schedule and budget ▪ Promote and communicate the overarching principles and objectives of the CCM program(refer to charter) ▪ Promote stakeholder engagement ▪ Approval of CCM guideline updates ▪ Review monthly project status updates ▪ Provide direction in shaping communications and dissemination strategies ▪ Participate actively and visibly throughout the program ▪ Hold meetings monthly or as deemed necessary by the Chair ▪ Alternate will be found or proxy will be given to any other member in the event a voting member is unable to attend
<p>CCM Steering Committee</p> <p>Membership</p> <p>Chair: Assistant Chief Judge J. Ogle – Provincial Court of Alberta</p> <ul style="list-style-type: none"> ▪ Tim Owens – CCM Project Lead ▪ Ayaaz Janmohamed – Executive Director, Information and Technology Services ▪ Peter Teasdale Q.C. – Acting Assistant Deputy Minister, Alberta Crown Prosecution Services ▪ Sandra Mitchell – Acting Director Regional Courts ▪ Shelley Tkatch – Public Prosecutions of Canada ▪ Margaret Keelaghan – Senior Managing Counsel, Calgary Legal Guidance ▪ Danny Lynn – Legal Aid 	<ul style="list-style-type: none"> ▪ Provide authority on resolution of major project issues ▪ Recommend changes to project scope, schedule and budget ▪ Identify and escalate potentially significant, sensitive or political issues to PIC, including options and recommendations for resolution ▪ Manage and implement the priorities assigned from PIC ▪ Ensure the effort to support the overarching principles and objectives of the CCM program (refer to charter) ▪ Review bi-weekly project status updates ▪ Provide monthly project updates to PIC ▪ Assist in shaping communication and dissemination strategies ▪ Participate actively and visibly throughout the program ▪ Hold meetings bi-weekly or as deemed necessary by the Chair ▪ Alternate will be found or proxy will be given to any other member in the event a voting member is unable to attend
<p>Working Groups</p> <ul style="list-style-type: none"> ▪ Criminal eFile Lead: Brankica Micevic – Business Analyst ▪ Crown Dates to Defence and Federal Matters to the CMO Lead: Jackie Starcevic – Business Analyst ▪ Lethbridge, Siksika, Strathmore Expansion Lead: Starr Rosin – Business Analyst ▪ Provincial Expansion Lead: Sherri Stasiuk – Business Analyst ▪ Automated Statistics - Francis Remedios – Director, Strategic Information and Evaluation 	<ul style="list-style-type: none"> ▪ Ensure achievement of objectives ▪ Review and approve deliverables ▪ Participate in on-going project communication processes ▪ Assess overall benefits ▪ Ensure delivery of benefits ▪ Implement plans for organization change ▪ Represent respective business requirements ▪ Review and accept deliverables ▪ Identify and resolve issues where appropriate ▪ Document project issues and risks ▪ Recommend decisions to the Steering Committee wherever possible through the project manager ▪ Participate actively and visibly throughout the program ▪ Hold meetings as deemed necessary by the lead ▪ Lead required to participate in weekly project status meetings

